

## A SALUTE TO ALUMNI ON THE FRONT LINES

*(From Rivier Today, Fall 2020)*

Last spring, COVID-19 entered our lives and overnight the world changed. Through a period of unprecedented uncertainty for our country and the world, Rivier alumni stood strong on the front lines ready to serve and protect their communities. To those whose stories we shared and to the countless others who continue to make a difference every day, we salute you. It is our privilege to share your stories of courage, compassion, and resilience.



**Bobbie Bagley '97/'14G**

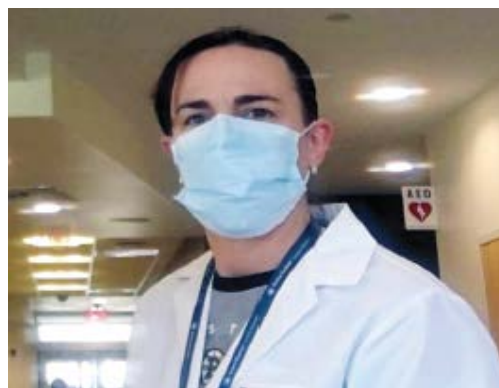
Director of Public Health and Community Services  
*City of Nashua, NH*

Bobbie Bagley tirelessly serves the Greater Nashua community working with city officials and others to keep citizens informed, prepared, and safe. “My job is to promote, preserve, and protect the health of our community and to lead the community response to emergent public health issues. The joint response to COVID-19 has been absolutely phenomenal. Everyone is working together including the City of Nashua, the Office of Emergency Management, hospitals, schools, and faith-based organizations. Together, as a community, we can stop the spread of this disease.”

**Cynthia Arcieri '96/'04G**

Director of Nursing  
*Dana-Farber Cancer Institute*

In addition to serving and supporting patients and their families, Cynthia Arcieri has worked closely with her teams at Dana-Farber to ensure proper use of personal protective equipment and to train clinicians on how to perform symptom screening. “At times, I am screening patients at our doors and providing emotional support and education for them,” Cynthia said. “I feel blessed to be able to come to work and to provide care to those who are most vulnerable.”



**Mailaja Mohammed '16G**

Nurse Practitioner  
*Holy Family Hospital/Southern NH Medical Center*

Mailaja Mohammed serves in leadership roles at two regional hospitals responsible for surge management as well as caring for COVID-19 patients. At the end of an evening shift last spring he shared, “At Holy Family, we are in the midst of what appears to be a surge. Tonight I was the admitting NP and most of the patients were COVID-19 positive. Although we have not had a surge at Southern NH, there are redeployment plans to move many of us, including myself, to the Emergency Room when it happens. We hope we prepared well, but not to see the surge come to fruition. Keep us all in your prayers.”

**Irene Arévalo '19**  
Medical/Surgical Nurse  
*Southern NH Medical Center*

As a recent graduate, Irene Arévalo never imagined she would be a front line nurse during a pandemic, but quickly found herself providing critical care on a COVID-19 ward. “Working directly with COVID-19 patients has been challenging in many ways,” Irene told us, “but also rewarding in many others.” Amid the sadness and loss, Irene looks for the positive. “It brings me so much joy when a patient finally begins to improve.”



**Melanie Spillane '17**  
Epidemiologist/Data Scientist  
*Centers for Disease Control and Prevention*

Working for the CDC in Fort Collins, Colorado, Melanie Spillane has worked to gather data for a case control study regarding risk factors for COVID-19 hospitalization. “This involves interviewing recovered or recovering patients about their symptom progression and contact history, analyzing and modeling public health surveillance data, and creating data visualization tools.” Melanie’s service extends beyond her professional role. She supports her community by volunteering at a COVID-19 Recovery Center for homeless individuals providing a resource for those who fail the screening process when attempting to enter local shelters.



**Richard Boardman '07G**  
Principal, Mount Pleasant Elementary School  
*Nashua, NH School District*

For Richard Boardman and his leadership team at Mount Pleasant Elementary School, supporting students remains the top priority, but through remote learning their work extends even further. “Just as we aim to support the whole child during a typical school day, we are now working harder than ever to support the whole family,” Richard said. “By collaborating with our staff and families, we are providing not only educational material but more importantly social/emotional support and basic necessities that families need.”





**Lindsey Sallesse '21G**  
Director of Medical-Surgical Nursing  
*Lahey Hospital & Medical Center*

As a nurse leader at Lahey Hospital & Medical Center, Lindsey ensures that nurses are supported and given the tools they need to succeed—a challenging responsibility during a healthcare crisis. Yet, Lindsey finds a reason to smile. Despite or due to the recent challenges presented, “This pandemic has brought the nursing team together in ways I never thought imaginable. I am proud to be part of this team and to watch the nurses rise to the occasion with compassion, dedication, and excellence. It is truly remarkable to witness.”

**Johaida Jean-Francois '13**  
Labor and Delivery Nurse  
*New York-Presbyterian Allen Hospital*

A travel labor and delivery nurse, Johaida is serving in New York City, an area hard hit by the COVID-19 crisis. This past spring, she found herself coaching new moms and newborns through the birthing process at the height of the pandemic. She tells us, “COVID-19 has visited, but I believe in my heart like any trouble, this virus can visit, but it cannot stay. We are treating our patients with compassion first and bringing competence and confidence to the front line.”

